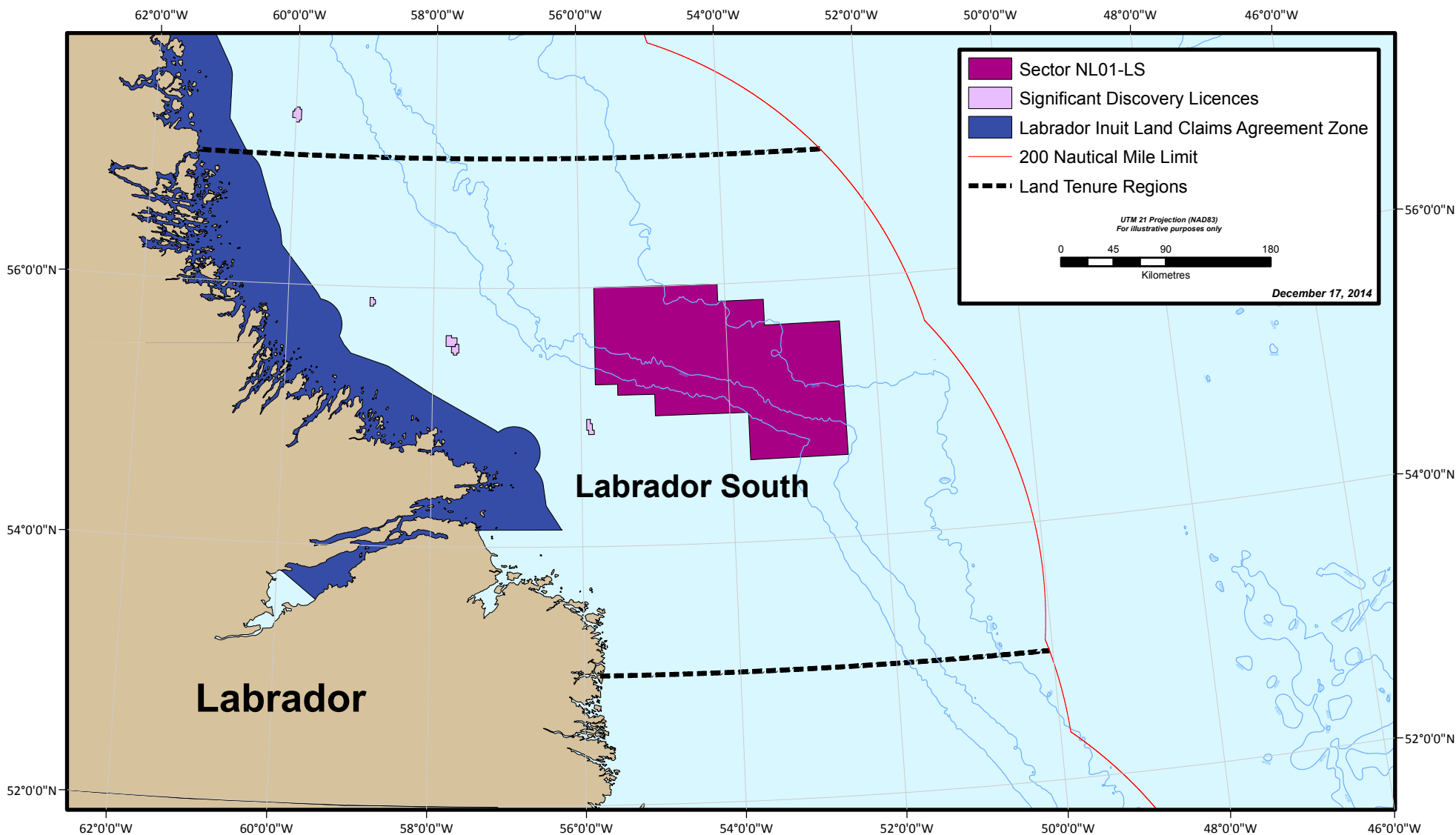


# Call for Nominations NL15-01LS (Areas of Interest) Labrador South Region



Any sector, parcel or licence depicted on this map beyond 200 nautical miles off the coast of Newfoundland and Labrador is not represented by the Board to reflect the full extent of Canada's continental shelf beyond 200 nautical miles. Canada has filed a submission regarding the limits of the Outer Continental Shelf in the Atlantic Ocean with the Commission on the Limits of the Continental Shelf, the review of which is pending. Any call for bids based on a sector or parcel identified in this map and any licences issued in those areas will be subject to approval as a Fundamental Decision under applicable legislation. The boundaries of sectors, parcels or licences in areas beyond 200 nautical miles may be revised to reflect the limits of the Outer Continental Shelf established by Canada. All interest holders of production licences containing areas beyond 200 nautical miles may be required, through legislation, regulation, licence terms and conditions, or otherwise, to make payments or contributions in order for Canada to satisfy obligations under Article 82 of the United Nations Convention on the Law of the Sea.